

AB-3PFB4 SERIES

THREE PASS FIREBOX
PACKAGED BOILERS

**ALLIED
BOILER**
& SUPPLY INC.

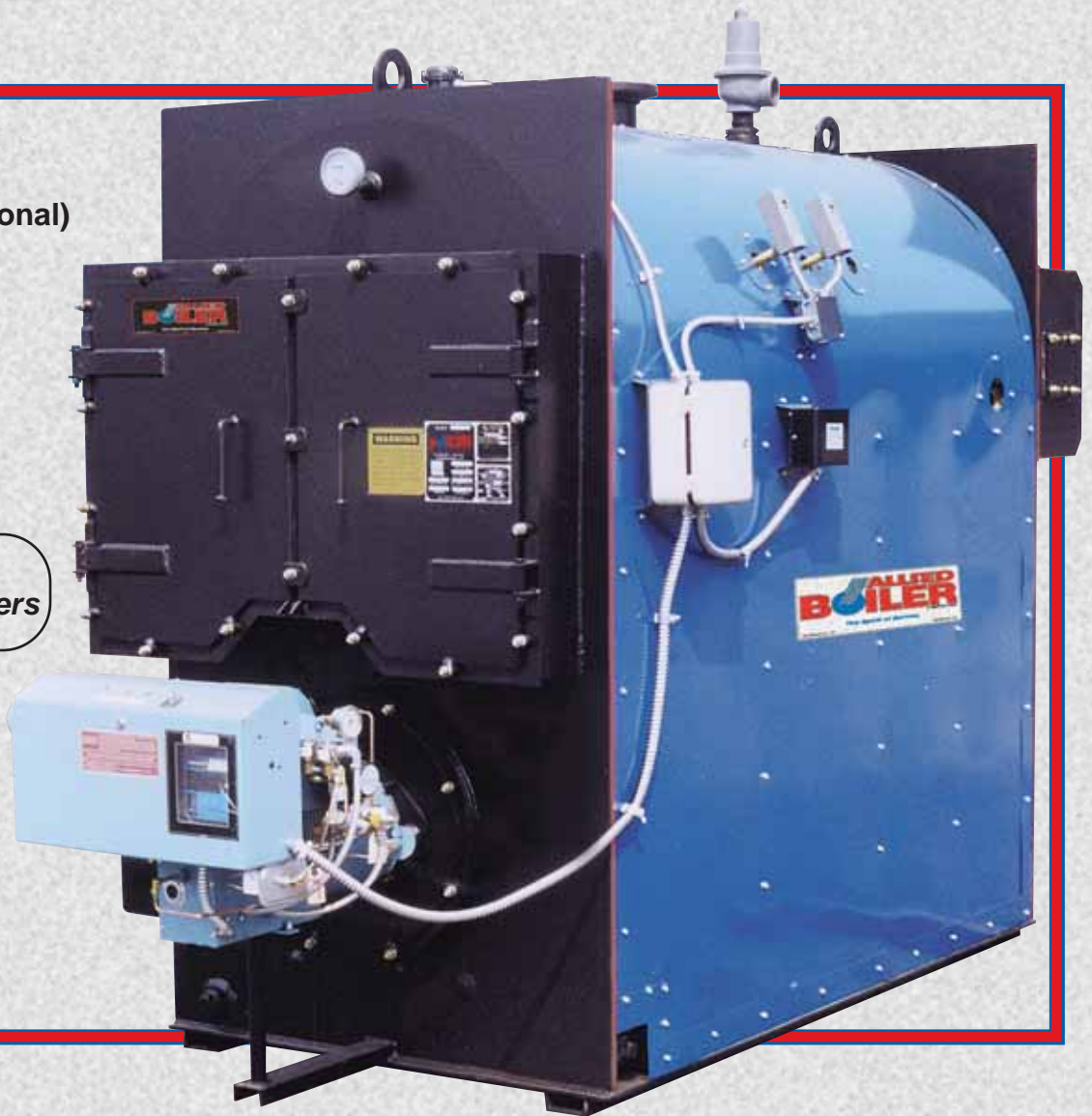
■ ALLIED WORK FORCE BOILERS ■

Capacities From
8.5 to 813 HP
285 to 27215
MBTU/HR.

Available in LOW NOx

15 PSI Steam
30 PSI Water
(60 PSI Water Optional)

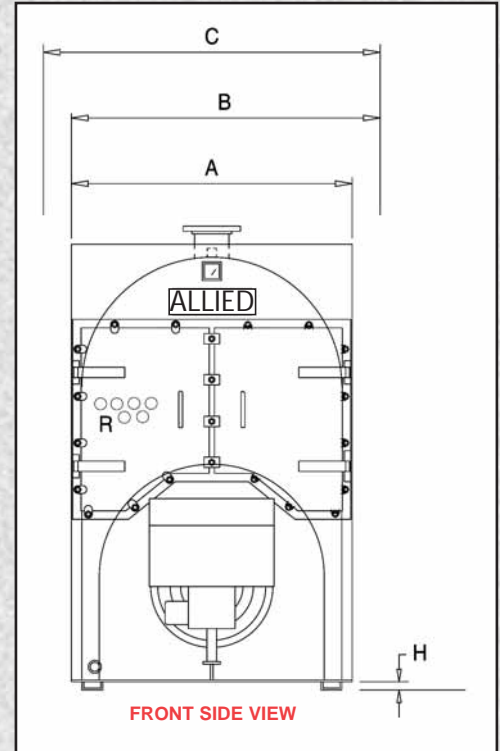
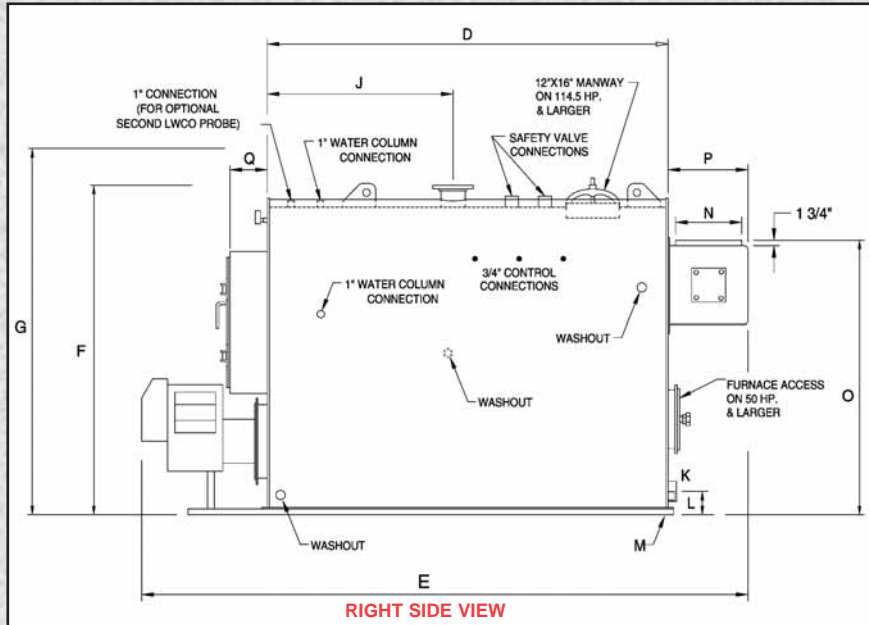
*UL Approved
Forced Draft Burners*



Inspected and registered
with the National Board of
Boiler & Pressure Vessel Inspectors.



Designed, constructed
and stamped in accordance with
the requirements of the ASME Boiler Codes.

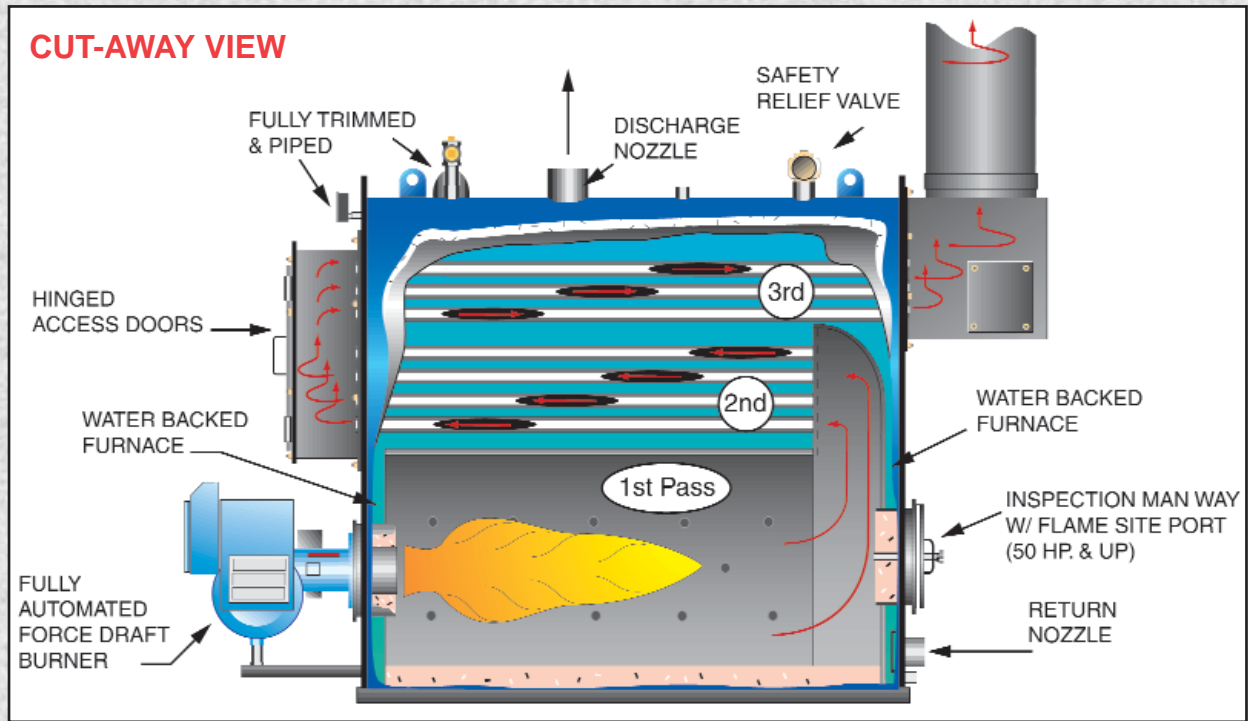


BOILER SPECIFICATIONS
(ALL DIMENSIONS ARE IN INCHES)

BOILER HORSEPOWER / MODEL NO.			8.5	13.4	16.4	20	25	30	37.5	50	56	62.5	
GROSS OUTPUT		MBH	285	449	549	670	837	1004	1255	1674	1875	2092	
STEAM OUTPUT	FROM & @212° F	LB/HR	293	462	566	690	863	1035	1294	1725	1932	2156	
FIRING RATE, GAS	1,000 BTU/CF	CFH	357	563	689	840	1050	1260	1575	2100	2352	2625	
FIRING RATE, #2 OIL	140,000 BTU	GPH	2.6	4.0	4.9	6.0	7.5	9.0	11.3	15	16.8	18.8	
FIRING RATE, #5 & #6 OIL	150,000 BTU	GPH	-	-	-	-	-	-	-	14	15.7	17.5	
TOTAL HEATING SURFACE		SQ. FT.	37	55	67	86	105	125	150	200	225	250	
RADIANT HEATING SURFACE		SQ. FT.	17.4	22.7	23.5	28.7	32.6	34.2	39.3	48	52	55	
FURNACE VOLUME		CU. FT.	6.8	7.3	9.2	12.4	14.8	18.7	22.5	27.4	30.7	33	
FURNACE HEAT RELEASE		MBH/CU. FT.	52.5	77	74.9	67.7	70.9	67.3	70	76.6	76.6	79.5	
A	WIDTH WITHOUT TRIM	IN	28	30	30	30	30	36	36	42	42	42	A
B	WIDTH WITH TRIM	IN	35	37	37	37	37	43	43	49	49	49	B
C	WIDTH WITH GAS TRAIN	APPROX. IN	47	49	49	49	49	55	55	61	61	61	C
D	BOILER LENGTH	IN	31	31	37	49	60	57	68	58	65	70	D
E	OVERALL LENGTH	W/ STD. BURNER IN	72	70	80	92	103	100	112	104	111	116	E
F	HEIGHT WITHOUT TRIM	IN	53	63 5/8	63 5/8	63 5/8	63 5/8	63 5/8	63 5/8	78 3/8	78 3/8	78 3/8	F
G	HEIGHT WITH TRIM	IN	60	70	70	70	70	70	70	85	85	85	G
H	BASE HEIGHT	IN	2	1 5/8	1 5/8	1 5/8	1 5/8	1 5/8	1 5/8	1 5/8	1 5/8	1 5/8	H
I	SUPPLY SIZE	30-WTR. & 15-STM. IN	3	4	4	4	4	4	4	4	6	6	I
J	SUPPLY LOCATION	IN	13 1/2	17	18 1/2	24 1/2	24 1/2	25	30	28 1/2	30 1/2	30 1/2	J
K	RETURN SIZE	30-WTR. IN	3	3	3	3	3	4	4	4	4	4	K
L	RETURN LOCATION	IN	6 1/4	5	5	5	5	6 1/4	6 1/4	6 3/8	6 3/8	6 3/8	L
M	DRAIN SIZE	IN	1	1	1	1	1	1 1/4	1 1/4	1 1/4	1 1/4	1 1/4	M
N	STACK DIAMETER O.D.	IN	6	8	8	8	8	10	10	12	12	12	N
O	STACK HEIGHT	IN	42 3/8	52 3/8	52 3/8	52 3/8	52 3/8	50 3/8	50 3/8	62	62	62	O
P	REAR SMOKEBOX DEPTH	IN	9 7/8	11 3/4	11 3/4	11 3/4	11 3/4	13 3/4	13 3/4	15 3/4	15 3/4	15 3/4	P
Q	FRONT SMOKEBOX DEPTH	IN	7	8	8	8	8	8	8	10 1/4	10 1/4	10 1/4	Q
R	BOILER FIRETUBE DIAMETER	IN	2.5	2	2	2	2	2	2	2	2	2	R
SHIPPING WEIGHT		LBS.	1500	1700	1800	2000	2100	3100	3350	4000	4400	5300	
WATER CAPACITY	(HOT/WATER)	GALS.	72	102	150	175	195	218	267	312	336	356	
WATER CAPACITY	(STEAM)	GALS.	58	88	105	138	168	184	224	252	281	305	
BOILER HORSEPOWER / MODEL NO.			8.5	13.4	16.4	20	25	30	37.5	50	56	62.5	

CONNECTIONS 4" & SMALLER ARE FEMALE THREAD, LARGER SIZES ARE 150 LB. FLANGES

AB-3PFB4 SERIES



	75	87.5	100	114.5	126.3	152	187.8	207.5	225	250	290	331	415	500	625	769	813
	2511	2929	3348	3833	4228	5088	6287	6946	7532	8369	9708	11080	13892	16738	20922	25742	27215
	2588	3019	3450	3950	4357	5244	6479	7159	7763	8625	10005	11420	14318	17250	21563	26531	28049
	3150	3675	4200	4809	5304	6384	7887	8715	9450	10500	12180	13902	17430	21000	26250	32298	34146
	22.5	26.2	30	34.3	37.9	45.6	56.3	62.3	67.5	75	87	99.3	124.5	150	187.5	230.7	243.9
	21	24.5	28	32	35.3	42.5	52.5	58.1	63	70	81	92.7	116.2	140	175	215.3	227.6
	300	350	411	458	505	625	750	830	900	1000	1160	1325	1660	2000	2500	3075	3250
	60	77	87	90.5	92	112	121	132	140	150	166	179	207	233	280	327	342
	40.6	52	67	68	73	92	116	132	142	155	188.7	210	261	311.4	361.6	505	535
	77.6	70.7	62.7	70.7	72.7	69.4	68	66	66.5	67.7	64.5	66.2	66.8	67.4	72.6	64	63.8
A	42	48	48	54	54	54	66 3/4	66 3/4	66 3/4	66 3/4	72	72	72	84	84	84	84
B	49	55	55	61	61	61	74	74	74	74	79	79	79	91	91	91	91
C	61	67	67	73	73	73	86	86	86	86	93	93	93	105	105	105	105
D	85	73	85	83 1/4	89 1/4	109 1/4	103 1/4	113 1/4	121 1/4	133 1/4	109 1/4	121 1/4	151 1/4	136 1/2	169 1/2	209 1/2	223 1/2
E	131	124	136	138	144	166	162	172	180	208	185	197	218	211	243	288	305
F	78 3/8	89 1/2	89 1/2	91	91	91	102 1/2	102 1/2	102 1/2	102 1/2	132 7/8	132 7/8	132 7/8	149 1/4	149 1/4	149 1/4	149 1/4
G	85	97	97	99	99	99	113	113	113	113	144 3/8	144 3/8	144 3/8	156	156	156	156
H	1 5/8	1 5/8	1 5/8	1 5/8	1 5/8	1 5/8	1 5/8	1 5/8	1 5/8	1 5/8	8	8	8	8 1/8	8 1/8	8 1/8	8 1/8
I	6	6	6	6	6	6	8	8	8	8	8	8	10	10	10	12	12
J	36 1/2	31 1/2	36 1/2	39 5/8	42 5/8	50 5/8	36 5/8	48 5/8	42 5/8	57 5/8	39 5/8	39 5/8	42 5/8	50 3/4	65 1/4	82 3/4	92 3/4
K	4	4	4	4	4	4	6	6	6	6	6	6	8	8	8	10	10
L	6 3/8	6 3/8	6 3/8	6 3/8	6 3/8	6 3/8	8	8	8	8	15 1/2	15 1/2	15 1/2	15 3/4	15 3/4	16 3/4	16 3/4
M	1 1/2	1 1/2	1 1/2	1 1/2	1 1/2	2	2	2	2	2	2	2	2	2	2	2	2
N	12	14	14	18	18	18	20	20	20	20	22	22	22	28	28	28	28
O	62 1/8	72 1/2	72 1/2	74 5/8	74 5/8	74 5/8	85 3/4	85 3/4	85 3/4	85 3/4	110 1/2	110 1/2	110 1/2	123 7/8	123 7/8	123 7/8	123 7/8
P	15 3/4	17 3/4	17 3/4	21 3/4	21 3/4	21 3/4	23 3/4	23 3/4	23 3/4	23 3/4	25 3/4	25 3/4	25 3/4	31 3/4	31 3/4	31 3/4	31 3/4
Q	10 1/4	11	11	11 1/8	11 1/8	11 1/8	13 1/4	13 1/4	13 1/4	13 1/4	15 1/4	15 1/4	15 1/4	18 3/4	18 3/4	18 3/4	18 3/4
R	2	2	2	2	2	2	3	3	3	3	3	3	3	3	3	3	3
	5700	7000	8800	9100	9500	10200	12000	13750	15000	16000	19000	20000	24000	29000	38200	48000	51000
	436	471	574	608	647	794	856	1136	1211	1333	1477	1594	2056	2400	3013	3690	3942
	366	383	457	500	528	648	648	913	957	1053	1152	1233	1605	1850	2329	2843	3018
	75	87.5	100	114.5	126.3	152	187.8	207.5	225	250	290	331	415	500	625	769	813

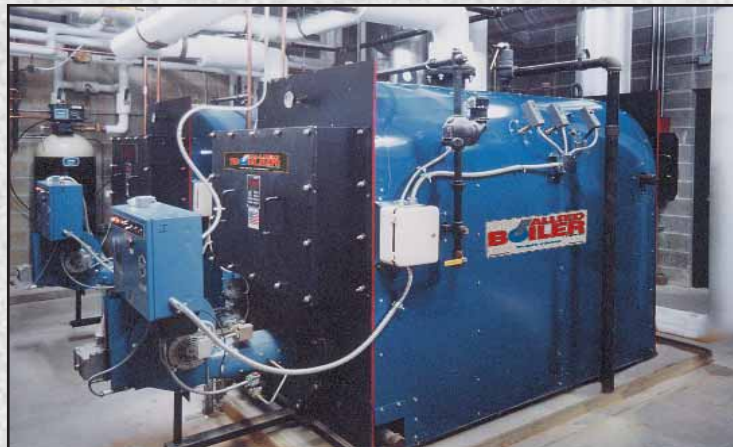
CONSULT ALLIED BOILER FOR LARGER SIZES

★ DIMENSIONS SUBJECT TO CHANGE WITHOUT NOTICE, CERTIFIED DRAWINGS AVAILABLE UPON REQUEST

■ ALLIED WORK FORCE BOILERS ■

STANDARD FEATURES-SERIES AB-3PFB4

- Efficient 3-Pass Design
- Flexibility – Gas, Oil, Heavy Oil, and Combination Gas/Oil
- ASME Code Constructed & Stamped for 15 PSI Steam/30 Water
- Registered with the National Board of Boiler Inspectors
- Competitively Priced, Easily Maintained, Designed for Efficiency
- Large Furnace Volume for Ultimate Combustion Efficiency
- Unified Refractory Base Floor
- Steel Skids and Lifting Eyes
- Low Heat Release Design
- Factory Insulated – 2” Mineral Wool
- Factory Jacketed & Painted
- Easy Access to Fireside Surfaces
- Ample Waterside Cleanout Openings
- Fully Automatic Operation
- U.L. Listed, Forced Draft Burners
- Wet Back Construction
- U.L. Listed Controls & Trim
- Factory Test Fired
- Flame Observation Ports
Front & Rear



STANDARD FEATURES — SERIES AB-3PFB4

All units are factory packaged with operating controls, relief valves, burner and fuel train. Installation is made simple in that only service connections are needed to place in operation. Flexible burner systems are available for firing natural gas, LP gas, #2 oil, heavy oil, or combinations. High density 2” mineral wool insulation assures lower radiant heat loss. In addition to meeting the requirements of U.L., burner systems are optionally available to meet the requirements of FM, IRI, MILITARY and others.

STEAM TRIM:

Steam pressure gauge with syphon and test-cock; combination low water cut-off and pump control (or feeder); auxiliary low water cut-off with manual reset; water column gauge glass set and drain valve; ASME safety relief valve(s); operating and high limit pressure control.

WATER TRIM

Combination pressure and temperature gauge; low water cut-off control with manual reset; ASME relief valve(s); operating and high limit temperature controls.

Revised 06-03

The Spirit of Service

alliedboiler.com



P. O. Box 806
Murfreesboro, TN 37133-0806
Tel: (615) 890-5385
Fax: (615) 890-6607
Toll Free: 1-800-858-0484
Email: info@alliedboiler.com

Represented by: