

AB-3PFBM SERIES

THREE PASS FIRETUBE
COMPACT BOILERS

**ALLIED
BOILER**
& SUPPLY INC.

■ ALLIED WORK FORCE BOILERS ■

*HEAVIEST DESIGNED
BOILER IN ITS CLASS*

"THROUGH THE DOOR DESIGN"




**Capacities From
20 to 100 HP**


**670 to 3,348
MBTU/HR.**

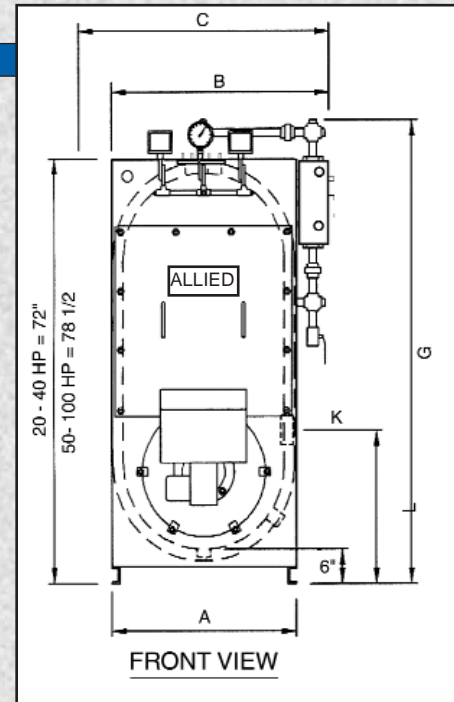
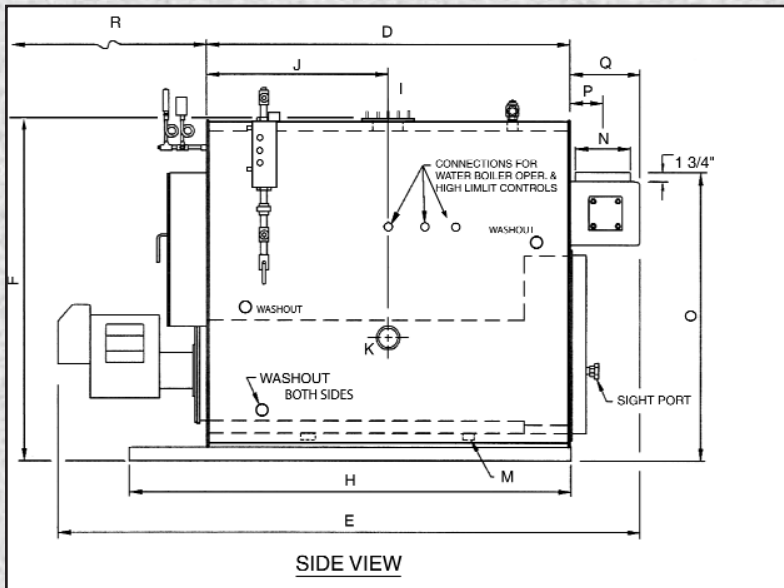
**15 PSI Steam
30 PSI Water
[60 PSI Water Optional]**

**UL Approved Forced
Draft Burners**

Available in LOW NOx

 Inspected and registered
with the National Board of
Boiler & Pressure Vessel Inspectors.

 Designed, constructed
and stamped in accordance with
the requirements of the ASME Boiler Codes.

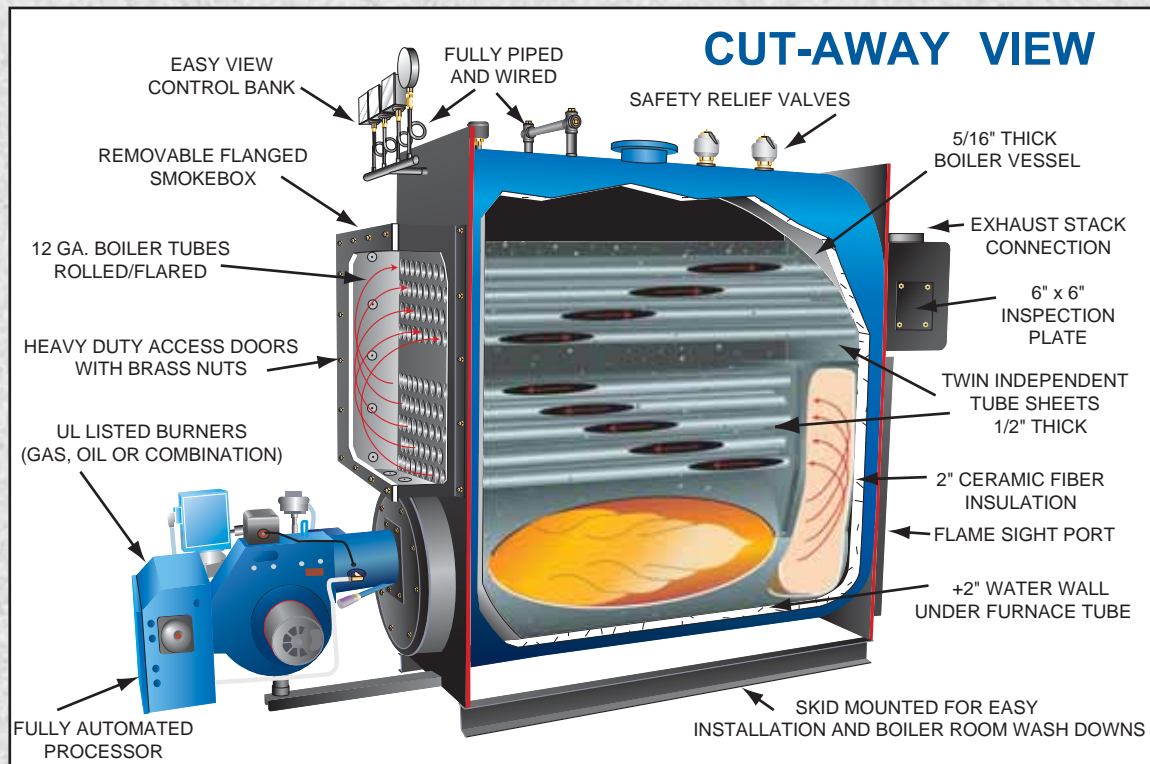


BOILER SPECIFICATIONS

(ALL DIMENSIONS ARE IN INCHES)

BOILER HORSEPOWER			20	30	40	50	60	70	80	100
HEATING SURFACE	FIRESIDE	SQ.FT.	100	132 1/2	165 1/2	200	246	291	336	400
STEAM OUTPUT FROM & @212°		LBS/HR	690	1035	1380	1725	2070	2415	2760	3450
MBH OUTPUT			670	1004	1339	1674	2009	2343	2678	3348
FIRING RATE, GAS	1,000 BTU	CFH	840	1260	1680	2100	2520	2940	3360	4200
FIRING RATE, #2 OIL	140,000 BTU	GPH	6	9	12	15	18	21	24	30
A WIDTH WITHOUT TRIM		IN	31	31	31	34 1/2	34 1/2	34 1/2	34 1/2	34 1/2
B WIDTH WITH TRIM		IN	38	38	38	42	42	42	42	42
C WIDTH WITH GAS TRAIN		IN	49	49	49	52	52	52	52	52
D BOILER LENGTH		IN	37	49	61	55	67	79	91	106
E OVERALL LENGTH	STD. BURNER	IN	86	98	114	111	123	140	152	169
F SUPPLY HEIGHT		IN	71 1/2	71 1/2	71 1/2	76 5/8	76 5/8	76 5/8	76 5/8	76 5/8
G HEIGHT WITH TRIM		IN	79	79	79	86	86	86	86	86
H LENGTH OF SKID		IN	54	66	78	72	84	96	108	123
I SUPPLY SIZE		IN	4	4	4	* 6	* 6	* 6	* 6	* 6
J SUPPLY LOCATION		IN	18 1/2	24 1/2	30 1/2	27 1/2	33 1/2	39 1/2	45 1/2	50 1/2
K RETURN SIZE		IN	4	4	4	4	4	4	4	4
L RETURN LOCATION		IN	27 1/4	27 1/4	27 1/4	32	32	32	32	32
M BOILER DRAIN SIZE		IN	1	1	1 1/4	1 1/4	1 1/4	1 1/2	1 1/2	1 1/2
N STACK DIAMETER, O.D.		IN	10	10	10	12	12	12	12	14
O STACK HEIGHT		IN	60 1/4	60 1/4	60 1/4	67 1/4	67 1/4	67 1/4	67 1/4	67 1/4
P TO CENTER OF STACK		IN	6 7/8	6 7/8	6 7/8	8 1/4	8 1/4	8 1/4	8 1/4	9 1/4
Q REAR SMOKEBOX DEPTH		IN	13 3/4	13 3/4	13 3/4	15 3/4	15 3/4	15 3/4	15 3/4	17 3/4
R TUBE PULL SPACE		IN	38	50	62	56	68	80	92	107
SHIPPING WEIGHT		LBS	2952	3670	4332	4342	5046	5875	6597	7464
WATER CONTENT - WATER	FLOODED	GALS	141	191	245	255	313	394	434	508
WATER CONTENT - STEAM		GALS	120	163	209	194	239	306	333	390
BOILER HORSEPOWER			20	30	40	50	60	70	80	100

CONNECTIONS FOUR INCHES AND SMALLER ARE FEMALE THREAD, 6" CONNECTIONS ARE 150 LB. *STUDDING FLANGE.



STANDARD EQUIPMENT

BOILER: Three pass design for 15 psi steam or 30 psi water (optionally available for 60 psi water). Factory assembled with trim, tested, ASME code, UL, and CSD-1 standards.

STEAM TRIM: Kunkle safety relief valve, operating pressure control, high limit pressure control with manual reset, 4 1/2" steam pressure gauge with syphon and test cock, combination pump control and low water cut-off with gauge glass assembly and drain valve, auxiliary low water cut-off with manual reset.

WATER BOILER TRIM: Kunkle safety relief valve, operating temperature control, high limit temperature control with manual reset, 3 1/2" combination pressure & temperature gauge, M&M 750 low water cut-off control with manual reset.

BURNER: UL listed with pre-piped, wired and factory tested forced draft power burners for natural gas, propane (LP) gas, No. 2 (diesel) oil, or combination gas/oil.

CONSULT ALLIED BOILER FOR LARGER SIZES

★ DIMENSIONS SUBJECT TO CHANGE WITHOUT NOTICE, CERTIFIED DRAWINGS AVAILABLE UPON REQUEST

■ ALLIED WORK FORCE BOILERS ■

- Factory Assembled, Prewired and Tested
- No Field Assembly Required
- UL Listed Burner Packages
- Complies with ASME, UL, CSD-1 and ASHRAE Standards
- High Efficiency, Low Stack Temperatures

AB-3PFBM BOILER FEATURES

Modified Scotch designed to fit through a standard 36" x 80" door opening
Up to 100HP (3,348 mbh output).

The Allied AB-3PFBM Series boiler is America's most heavily designed and built boiler in its class.

Consider all the great features built into the Allied Work Force Boiler line and you will see why America chooses Allied first!

1. A welded steel firetube boiler, the AB-3PFBM has extra-heavy 12-gauge tubes for extended life. All tubes are attached to the tube sheets by rolling and flaring. There are no welded tubes in the AB-3PFBM.
2. Thickest materials used in the industry . . .
 - A. Boiler shell is 5/16" thick boiler plate 20-40 HP / 3/8" 50-100 HP.
 - B. Twin boiler tube sheets are 1/2" thick boiler plate.
 - C. Insulation is 2" mineral wool and is lagged with 22-gauge boiler jacket.
 - D. Extra heavy 4" channel iron boiler skids.
3. Designed to last with special industrial grade features . . .
 - A. Couplings are 3,000 psi.
 - B. Flanged, detachable front and rear smoke boxes.
 - C. Brass nuts on front access panels, brass plugs in factory pre-piped crosses and tees on trim.

Revised 06-03

The Spirit of Service

alliedboiler.com



P. O. Box 806
Murfreesboro, TN 37133-0806
Tel: (615) 890-5385
Fax: (615) 890-6607
Toll Free: 1-800-858-0484
Email: info@alliedboiler.com

Represented by: